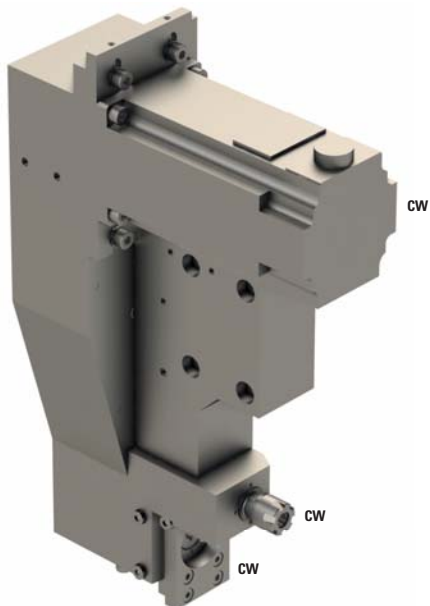


SR10J-GSC-E11S

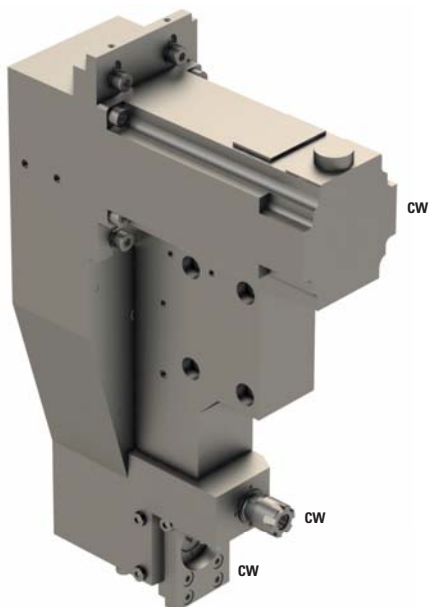


| | |
|---|---------|
|  | ER11 |
|  | 1:1.666 |
| RPM max. | 13'328 |
| Machines Types | SR10J |
| Note : | |

Original main block is to replace by this tool. To adjust the offset please contact your local Star Micronics dealer.
 Tool N°3100 are losted.
 Tool N°3200 in ER11 with RPM 13'328.
 Tool N°3300 is a modular quick change for different operation.



SR10J-GSC-E11AZ

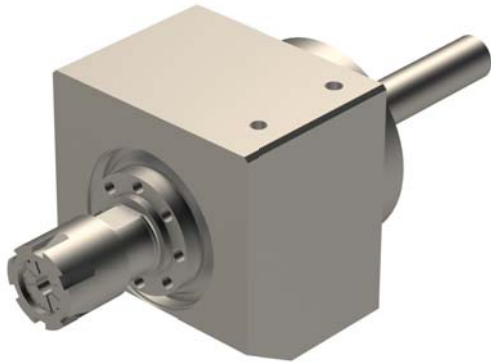


| | |
|---|---------|
|  | ER11 |
|  | 1:1.666 |
| RPM max. | 13'328 |
| Machines Types | SR10J |
| Note : | |

Original main block is to replace by this tool. To adjust the offset please contact your local Star Micronics dealer.
 Tool N°3100 are losted.
 Tool N°3200 in ER11 with RPM 13'328.
 Tool N°3300 is a modular quick change for different operation.
 Same construction as the SR10J-GSC-E11S but:
 The fixed spindle ER11 with RPM 13'328 are 8.7mm setback.
 The main block are 10mm longer.



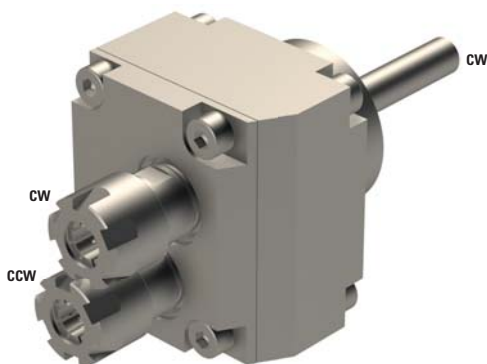
SR10J-GSC-E08




| | |
|---|-------|
|  | 8 |
|  | 1:1 |
| RPM max. | 8'000 |
| Machines Types | SR10J |
| Note : | |



SR10J-GSC-E11-2X

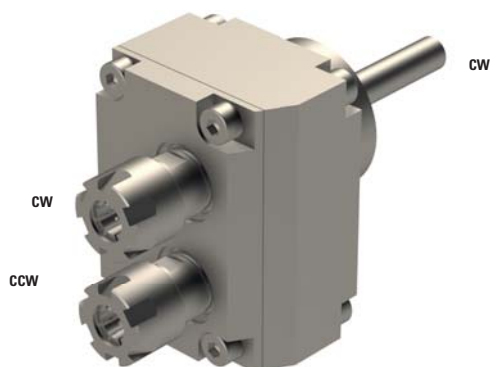



| | |
|---|--------|
|  | 2xER08 |
|  | 1:1 |
| RPM max. | 8'000 |
| Machines Types | SR10J |
| Note : | |

Offset second spindle : 4mm / 16.5mm



SR10J-GSC-E11-2X-DEC



| | |
|---|--------|
|  | 2xER08 |
|---|--------|

| | |
|---|-----|
|  | 1:1 |
|---|-----|

| | |
|-----------------|-------|
| RPM max. | 8'000 |
|-----------------|-------|

| | |
|-----------------------|-------|
| Machines Types | SR10J |
|-----------------------|-------|


Note :

Offset seconde spindle : 0mm / 22mm



E20-GSE-110



| | |
|---|------|
|  | ER16 |
|---|------|

| | |
|---|-----|
|  | 1:1 |
|---|-----|

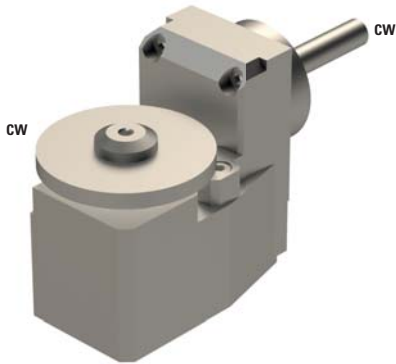
| | |
|-----------------|-------|
| RPM max. | 8'000 |
|-----------------|-------|

| | |
|-----------------------|---|
| Machines Types | ECAS-12 ECAS-20 SB-12 SB-20B SR10J SR-20J SR-20JN SR-20RIII SR-20RII SR-20RIV SR-32J SR-32JN SW-12RII |
|-----------------------|---|

Note :



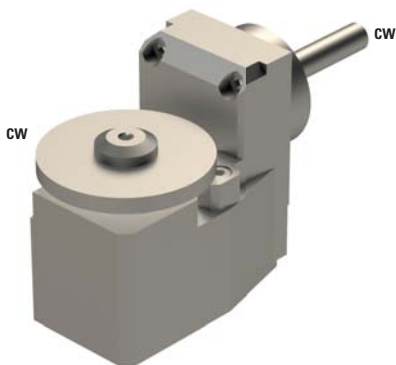
SR10J-GSF-080-II



| | |
|---|-------|
|  | 8 |
|  | 1:1 |
| RPM max. | 8'000 |
| Machines Types | SR10J |
| Note : | |



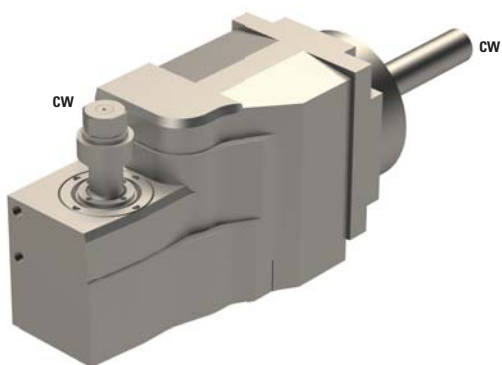
SR10J-GSF-100-II



| | |
|---|-------|
|  | 10 |
|  | 1:1 |
| RPM max. | 8'000 |
| Machines Types | SR10J |
| Note : | |



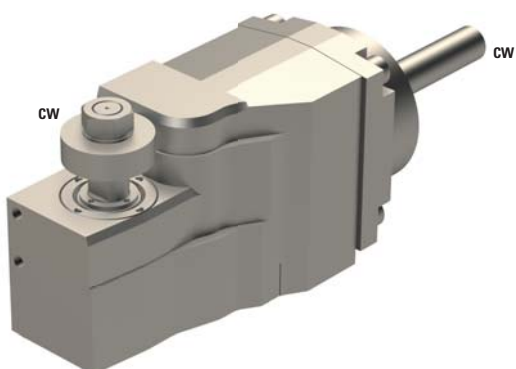
SR10J-GSH-035-II





| | |
|---|-------|
|  | 3.5 |
|  | 1:1 |
| RPM max. | 8'000 |
| Machines Types | SR10J |
| Note : | |

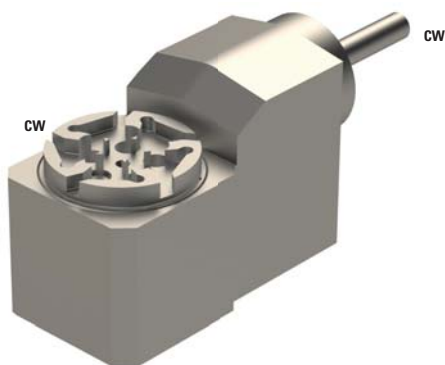


SR10J-GSH-050-II



| | |
|---|-------|
|  | 5 |
|  | 1:1 |
| RPM max. | 8'000 |
| Machines Types | SR10J |
| Note : | |



SR10J-GSW-010

| | |
|---|-------|
|  | - |
|  | 1:1 |
| RPM max. | 8'000 |
| Machines Types | SR10J |
| Note : | |

Adjustable $\pm 10^\circ$
Special cutter head from PCM Willen SA, Z=5, $\varnothing 6$ mm

