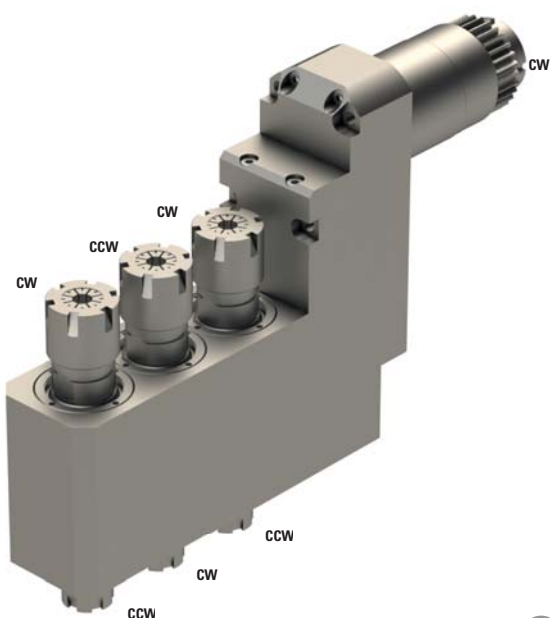


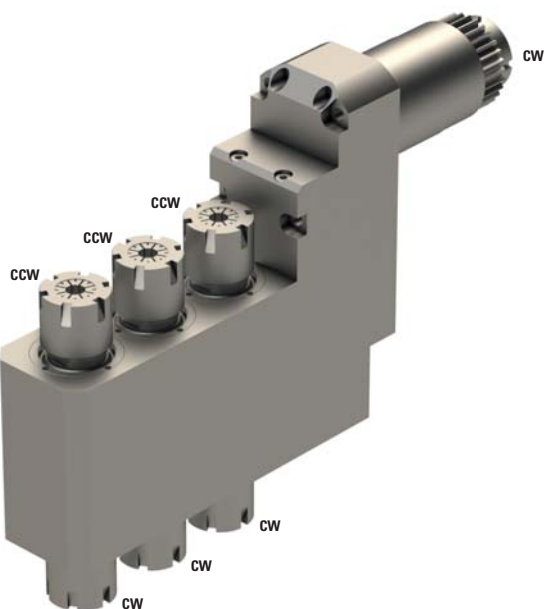




SR20J-GSE-3710



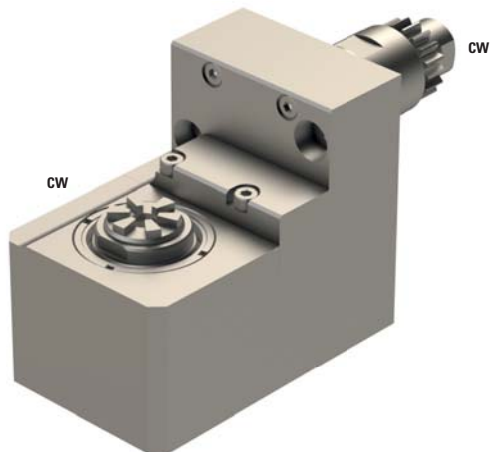
	3xER16+3xER11
	1:1
RPM max.	8'000
Machines Types	SB-12 SB-20R SR-20J SR-20JN SR-20RIII SR-20RII SR-20RIV
Note :	


SR20J-GSE-2310



	3xER16+3xER16
	1:1
RPM max.	8'000
Machines Types	SB-12 SB-20R SR-20J SR-20JN SR-20RIII SR-20RII SR-20RIV
Note :	

SR20J-RSC-007



	ER11
---	------

	1:1
---	-----

RPM max.	8'000
----------	-------

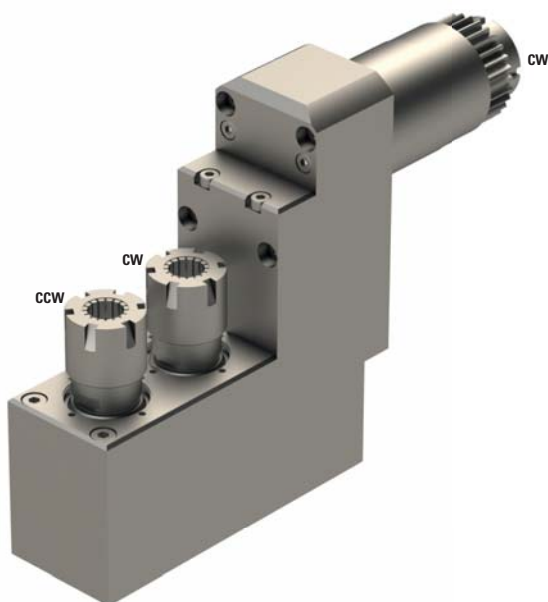
Machines Types


ECAS-12
 ECAS-20
 SB-12
 SB-20R
 SR-10J
 SR-20J
 SR-20JN
 SR-20RIII
 SR-20RII
 SR-20RIV
 SR-32J
 SR-32JN
 SV-20R
 SW-12RII

Note :



E20-GSE-210



	2xER16
---	--------

	1:1
---	-----

RPM max.	8'000
----------	-------

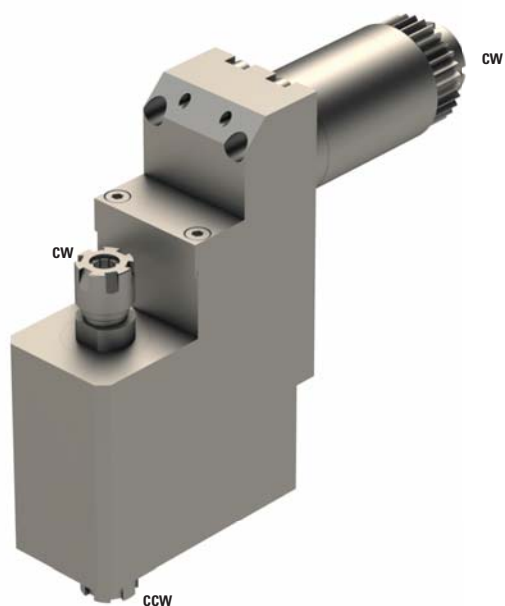
Machines Types



ECAS-12
 ECAS-20
 SR-20J
 SR-20JN
 SR-20RIII
 SR-20RII
 SR-20RIV
 SW-20

Note :



E20-DE-1111

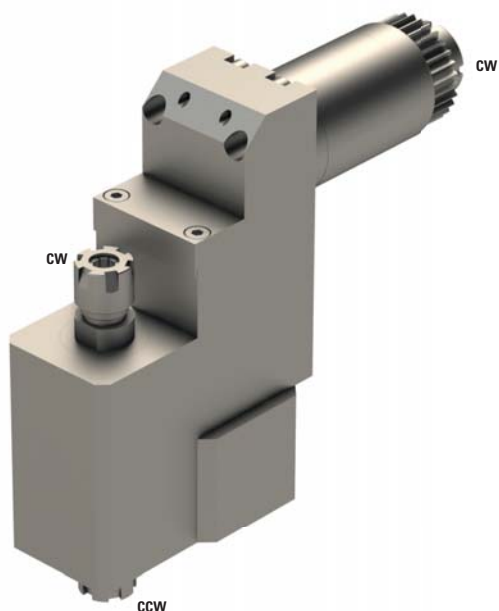




	2xER11
	1:1
RPM max.	6'000
Machines Types	ECAS-12
	ECAS-20
	SR-20J
	SR-20JN
	SR-20RIII
	SR-20RII
	SR-20RIV
	SW-20
SB-12	
SB-20R	

Note :



E20-DS-2222

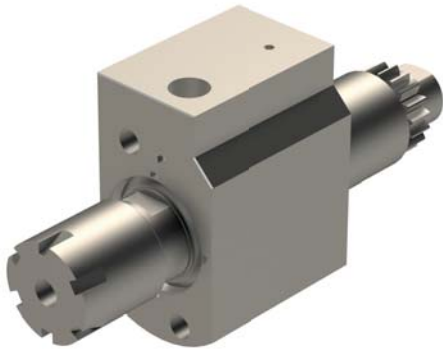


	2xER11
	1:2
RPM max.	5'000
Machines Types	ECAS-12
	ECAS-20
	SR-20J
	SR-20JN
	SR-20RIII
	SR-20RII
	SR-20RIV
	SW-20
SB-12	
SB-20R	

Note :



SR20J-GSE-010-HP

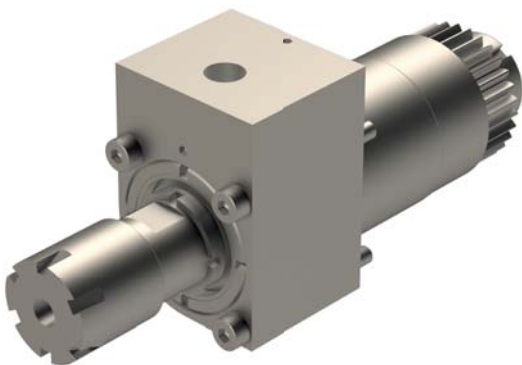


	ER11
	1:1
RPM max.	8'000
Machines Types	SR-20J
Note :	

Maximum 150 bar
Position T2100/T2200/T2300/T2400



SR20J-GSC-010-HP

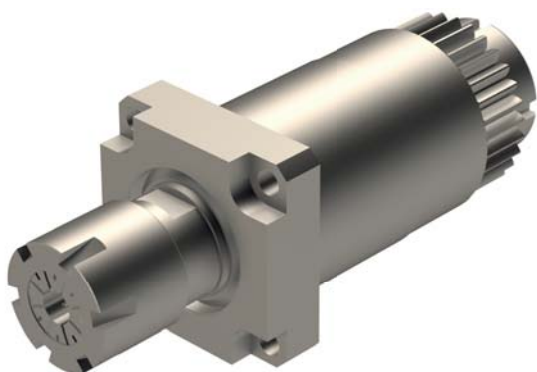



	ER11
	1:1
RPM max.	8'000
Machines Types	SR-20J
Note :	


Maximum 150 bar
Position T3400/T3500



E20-GSC-110



 ER16

 1:1

RPM max. 8'000

Machines Types

ECAS-12
ECAS-20
SR-20J
SR-20JN
SR-20RIII
SR-20RII
SR-20RIV
SR-32J
SR-32JN
SV-12
SV-20
SV-32
SV-32JII
SW-20


Note :

STAR N° 331-50-00



E20-GSE-110



 ER16

 1:1

RPM max. 8'000

Machines Types

ECAS-12
ECAS-20
SB-12
SB-20B
SR10J
SR-20J
SR-20JN
SR-20RIII
SR-20RII
SR-20RIV
SR-32J
SR-32JN
SW-12RII

Note :



E20-GSC-3X



ER11



1:2.59

RPM max.

14'892.5

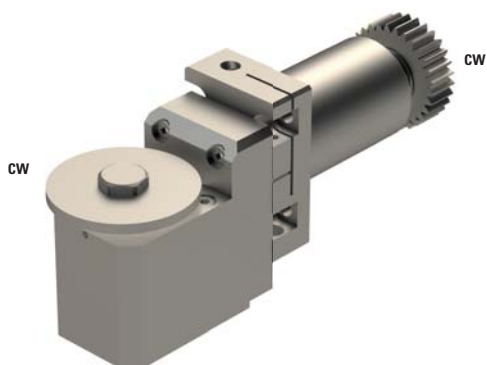
ECAS-20T
 SR-20J
 SR-20RII
 SR-20RIV
 SR-20RIII
 SV-12
 SV-20
 SV-32
 SV-32J
 SV-32JN

Machines Types

Note :



STAR3-GSP-218

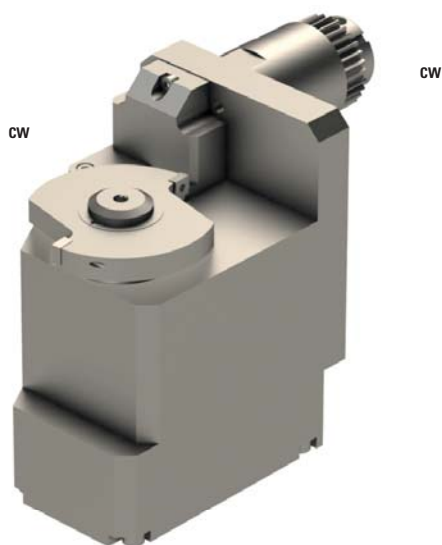


	8
	1:1
RPM max.	8'000
Machines Types	SW12-R11
Note :	

Adjustable $\pm 10^\circ$
Position T3300



SR20R11-GSP-713

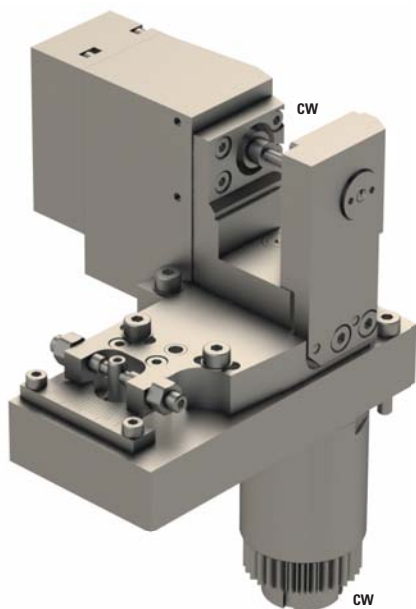



	13
	1:1
RPM max.	3'000
Machines Types	SR20R11
Note :	

Position T3400-T3500
Max. tool $\varnothing 60$ mm
Max. thickness 8.3 mm



E20-RSH-035



 3.5

 1:1

RPM max. 5'000

Machines Types

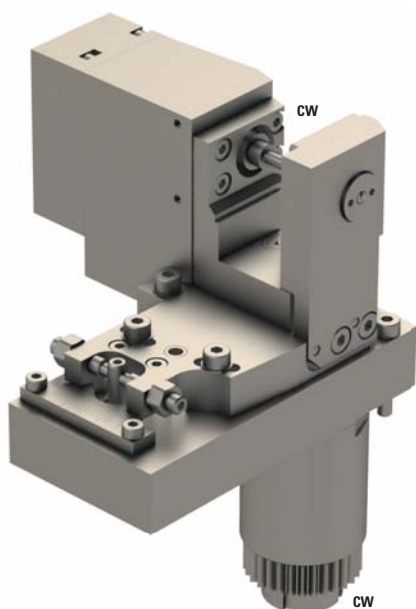
ECAS-12
 ECAS-20
 SR-20J
 SR-20JN
 SR-20RIII
 SR-20RII
 SR-32J
 SR-32JN


Note :

Adjustable $\pm 5^\circ$



E20-RSH-080



 8

 1:1

RPM max. 5'000

Machines Types

ECAS-12
 ECAS-20
 SR-20J
 SR-20JN
 SR-20RIII
 SR-20RII
 SR-32J
 SR-32JN


Note :

Adjustable $\pm 5^\circ$



SR20J-W20



	-
---	---

	1:1
---	-----

RPM max.	8'000
-----------------	-------

Machines Types	ECAS-12
	ECAS-20
	SR-20J
	SR-20JN
	SR-20RIII
	SR-20RII
	SR-32J
	SR-32JN
SW-20	


Note :

Use 2 Locations
 Adjustable $\pm 20^\circ$
 SCHWANOG 191884, Z=6, $\varnothing 12\text{mm}$



STAR2-GSW-210



	-
---	---

	1:1
---	-----

RPM max.	8'000
-----------------	-------

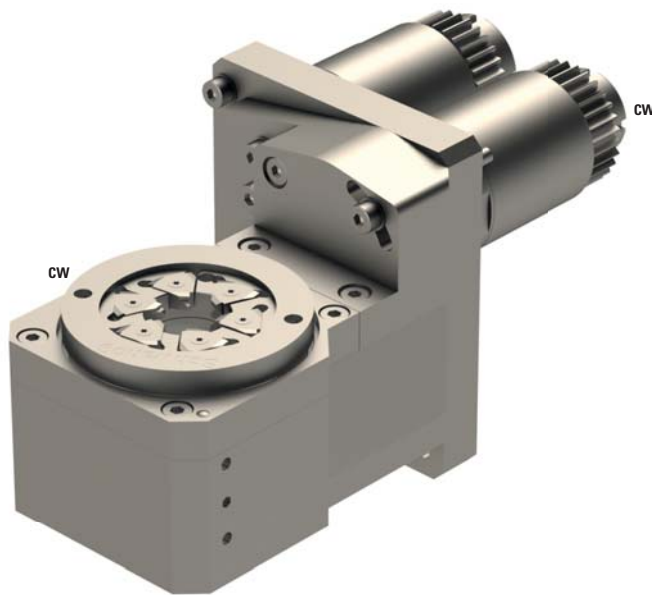
Machines Types	SR20J
	SB-16R



Note :

Position T3400 and T3500
 Adjustable $\pm 10^\circ$
 GSW-210-FPSWG, Z=5, $\varnothing 6\text{mm}$



E20-W20



	-
	1:1
RPM max.	8'000

Machines Types	ECAS-12
	ECAS-20
	SR-20J
	SR-20JN
	SR-20RIII
	SR-20RII
	SR-32J
SR-32JN	
SW-20	

Note :

Adjustable $\pm 20^\circ$
 Need 2 positions
 SCHWANOG 218135, Z=5, $\varnothing 6\text{mm}$
 GLOOR 501-0003, Z=5, $\varnothing 6\text{mm}$



E20C-901-AR



∅ 3x32

⚙️+⚙️ -

RPM max. -

Machines Types
ECAS-12
ECAS-20
SR-20J
SR-20JN
SR-20RIII
SR-20RII
SR-20RIV
SW-20

Note :

