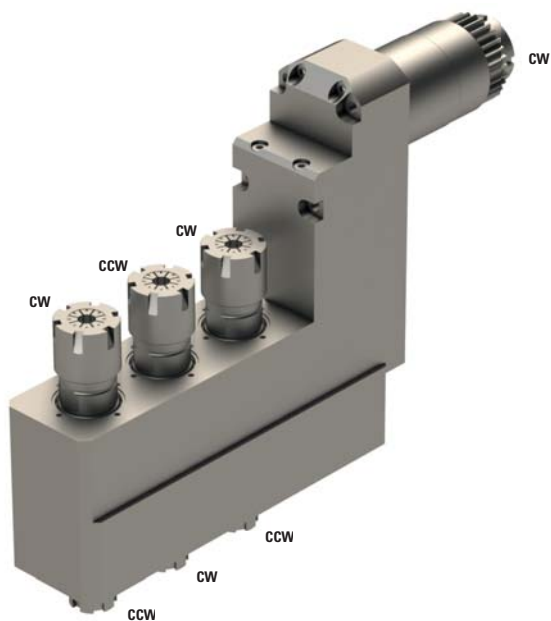




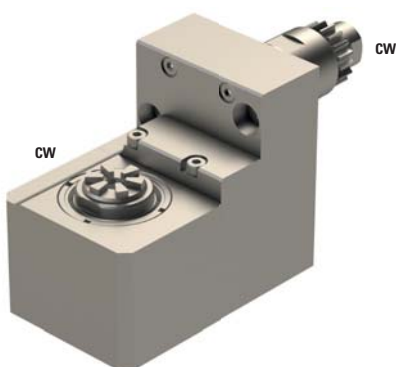
## SR32J-GSE-3710





	3xER16+3xER11
	1:1
<b>RPM max.</b>	8'000
<b>Machines Types</b>	SR-32J SR-32JN
<b>Note :</b>	



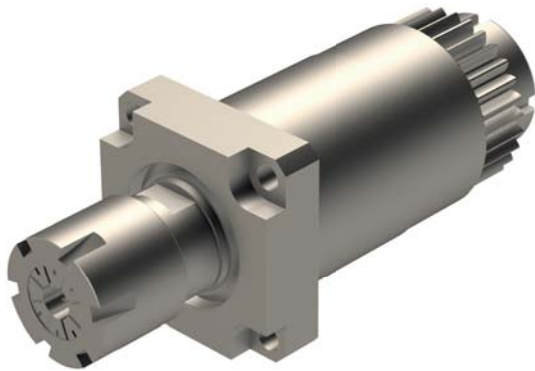
## SR20J-RSC-007




	ER11
	1:1
<b>RPM max.</b>	8'000
<b>Machines Types</b>	ECAS-12 ECAS-20 SB-12 SB-20R SR-10J SR-20J SR-20JN SR-20RIII SR-20RII SR-20RIV SR-32J SR-32JN SV-20R SW-12RII
<b>Note :</b>	



## E20-GSC-110



	ER16
---	------

	1:1
---	-----

RPM max.	8'000
----------	-------

### Machines Types


ECAS-12  
 ECAS-20  
 SR-20J  
 SR-20JN  
 SR-20RIII  
 SR-20RII  
 SR-20RIV  
 SR-32J  
 SR-32JN  
 SV-12  
 SV-20  
 SV-32  
 SV-32JII  
 SW-20

Note :



## E20-GSE-110



	ER16
---	------

	1:1
---	-----

RPM max.	8'000
----------	-------

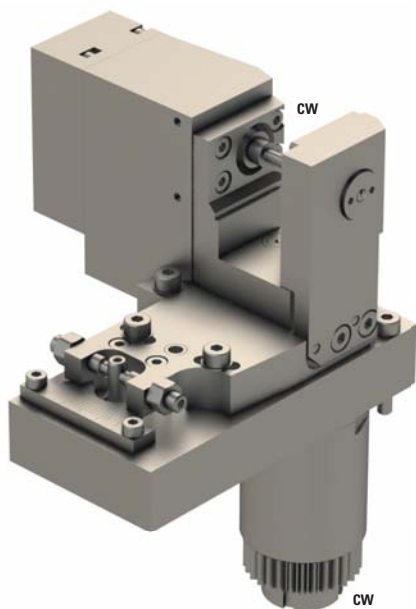
### Machines Types


ECAS-12  
 ECAS-20  
 SB-12  
 SB-20B  
 SR10J  
 SR-20J  
 SR-20JN  
 SR-20RIII  
 SR-20RII  
 SR-20RIV  
 SR-32J  
 SR-32JN  
 SW-12RII

Note :



## E20-RSH-035



 3.5

 1:1

**RPM max.** 5'000

**Machines Types**

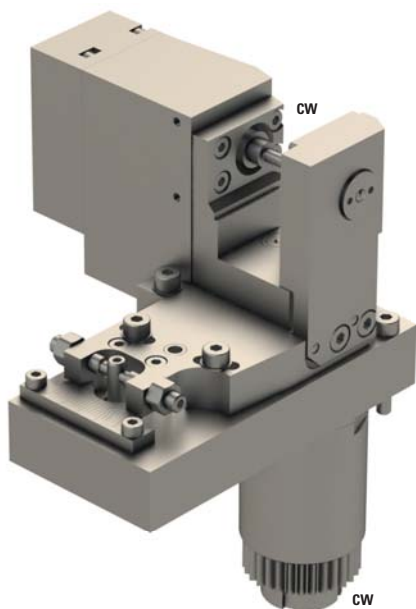
ECAS-12  
ECAS-20  
SR-20J  
SR-20JN  
SR-20RIII  
SR-20RII  
SR-32J  
SR-32JN


**Note :**

Adjustable  $\pm 5^\circ$



## E20-RSH-080



 8

 1:1

**RPM max.** 5'000

**Machines Types**

ECAS-12  
ECAS-20  
SR-20J  
SR-20JN  
SR-20RIII  
SR-20RII  
SR-32J  
SR-32JN

**Note :**

Adjustable  $\pm 5^\circ$



## SR20J-W20



-



1:1

RPM max.

8'000

### Machines Types

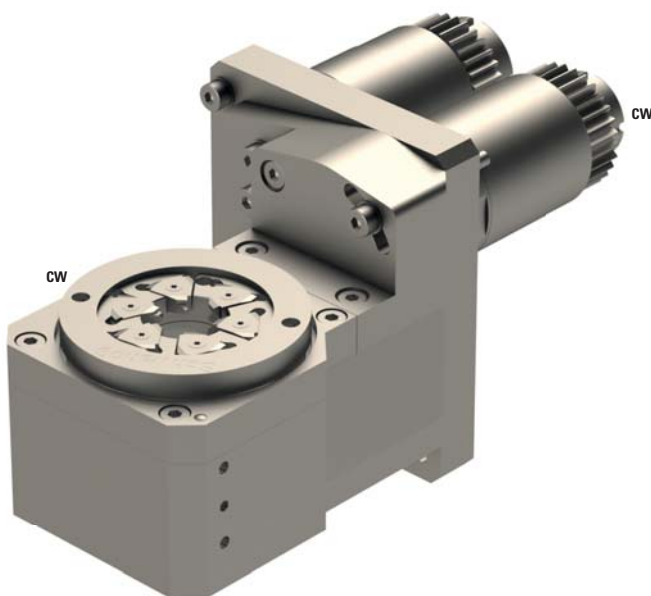
ECAS-12  
 ECAS-20  
 SR-20J  
 SR-20JN  
 SR-20RIII  
 SR-20RII  
 SR-32J  
 SR-32JN  
 SW-20

### Note :

Use 2 Locations  
 Adjustable  $\pm 20^\circ$   
 SCHWANOG 191884, Z=6,  $\varnothing 12\text{mm}$



## E20-W20



-



1:1

RPM max.

8'000

### Machines Types

ECAS-12  
 ECAS-20  
 SR-20J  
 SR-20JN  
 SR-20RIII  
 SR-20RII  
 SR-32J  
 SR-32JN  
 SW-20

### Note :

Adjustable  $\pm 20^\circ$   
 Need 2 positions  
 SCHWANOG 218135, Z=5,  $\varnothing 6\text{mm}$   
 GLOOR 501-0003, Z=5,  $\varnothing 6\text{mm}$

