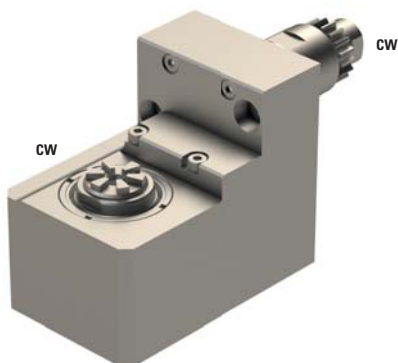



## SR20J-RSC-007



 ER11

 1:1

**RPM max.** 8'000

**Machines Types**


- ECAS-12
- ECAS-20
- SB-12
- SB-20R
- SR-10J
- SR-20J
- SR-20JN
- SR-20RIII
- SR-20RII
- SR-20RIV
- SR-32J
- SR-32JN
- SV-20R
- SW-12RII

**Note :**



## E20-GSE-110



	ER16
---	------

	1:1
---	-----

RPM max.	8'000
----------	-------

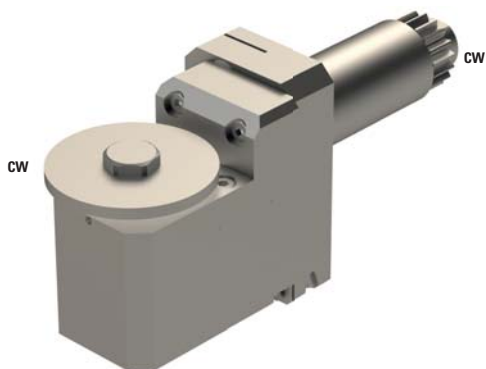
### Machines Types

ECAS-12  
 ECAS-20  
 SB-12  
 SB-20B  
 SR10J  
 SR-20J  
 SR-20JN  
 SR-20RIII  
 SR-20RII  
 SR-20RIV  
 SR-32J  
 SR-32JN  
 SW-12RII

Note :



## SW12-GSP-218

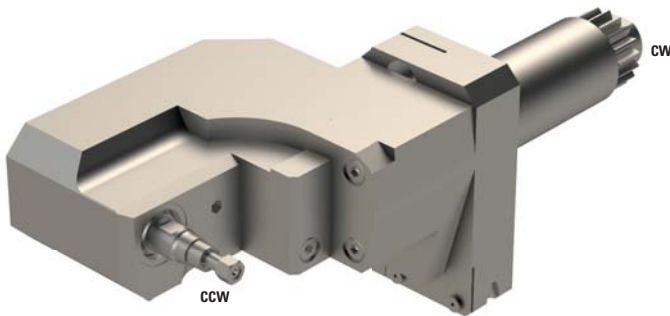



	8
	1:1
<b>RPM max.</b>	8'000
<b>Machines Types</b>	SW12-R11
<b>Note :</b>	


Position T700  
Position T800 will be bloqued  
Adjustable  $\pm 10^\circ$   
Base STAR1-PCR



## SW12-GSH-045



	3.5+4.5
---	---------

	1:1
---	-----

<b>RPM max.</b>	8'000
-----------------	-------

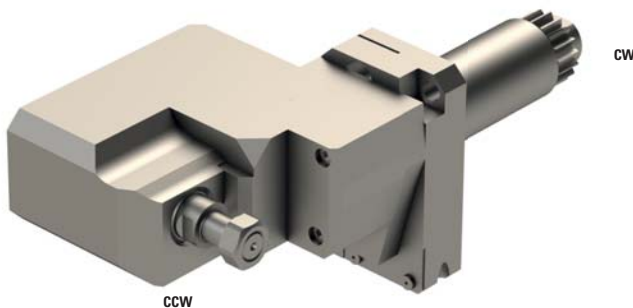
<b>Machines Types</b>	SW12-R11
-----------------------	----------


**Note :**

Position T900  
 Position T800 will be bloqued  
 Adjustable +15°/-3°  
 Base STAR1-PCR



## SW12-GSH-080



	8.0
---	-----

	1:1
---	-----

<b>RPM max.</b>	8'000
-----------------	-------

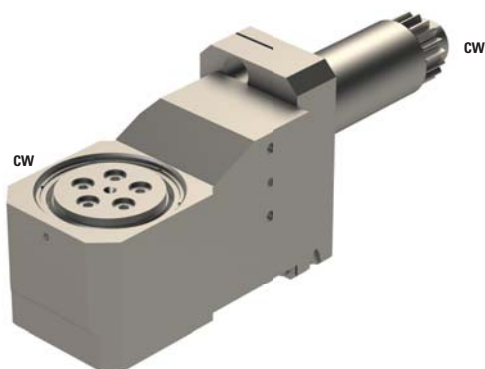
<b>Machines Types</b>	SW12-R11
-----------------------	----------


**Note :**

Position T900  
 Position T800 will be bloqued  
 Adjustable +10°/-3°  
 Base STAR1-PCR



## SW12-GSW-210



 3.5+4.5

 1:1

**RPM max.** 8'000

**Machines Types** SW12-R11

**Note :**

Position T700  
Adjustable  $\pm 10^\circ$   
GSW-210-FPSWG, Z=5,  $\varnothing 6\text{mm}$

