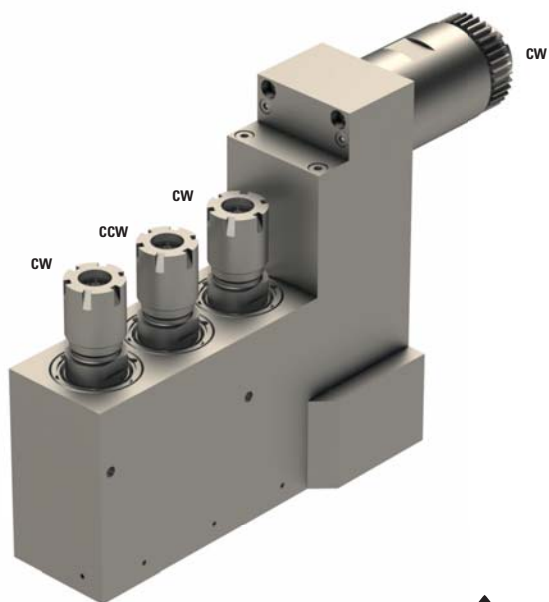


## LL-ZBDO-ER16-HP



	3xER16
	1:1
<b>RPM max.</b>	5'000
<b>Machines Types</b>	SW-42
<b>Note :</b>	

For interne coolant in high pressure max 150Bar



## LL-ZBBO-ER16-3X




	ER16
	1:3
RPM max.	15'000
Machines Types	SW-42
Note :	



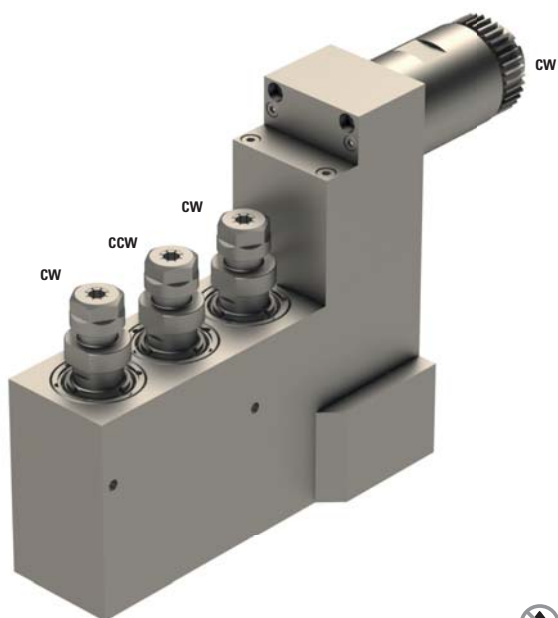
## LL-ZBBO-ER25




	ER25
	1:1
RPM max.	5'000
Machines Types	SW-42
Note :	



## LL-ZBDO-CR-3X



	3xER11
---	--------

	1:3
---	-----

<b>RPM max.</b>	15'000
-----------------	--------

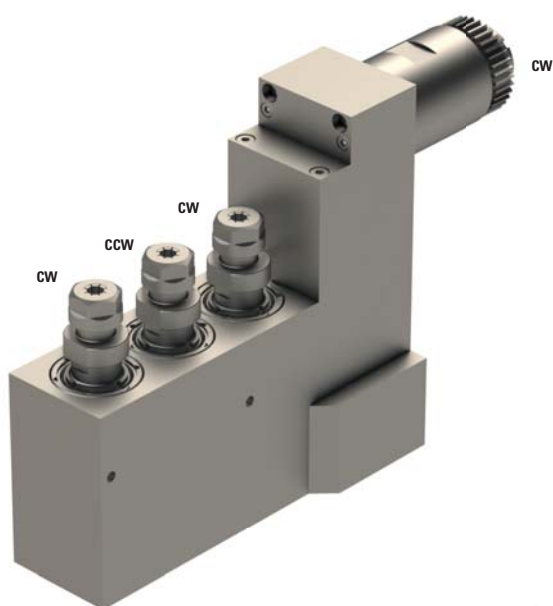
<b>Machines Types</b>	SW-42
-----------------------	-------


**Note :**

Quick change



## LL-ZBDO-CR-2X



	3xER11
---	--------

	1:3
---	-----

<b>RPM max.</b>	15'000
-----------------	--------

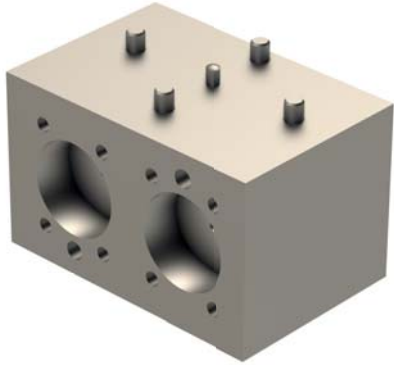
<b>Machines Types</b>	SW-42
-----------------------	-------

**Note :**

Quick change



## LL-ZD-CR

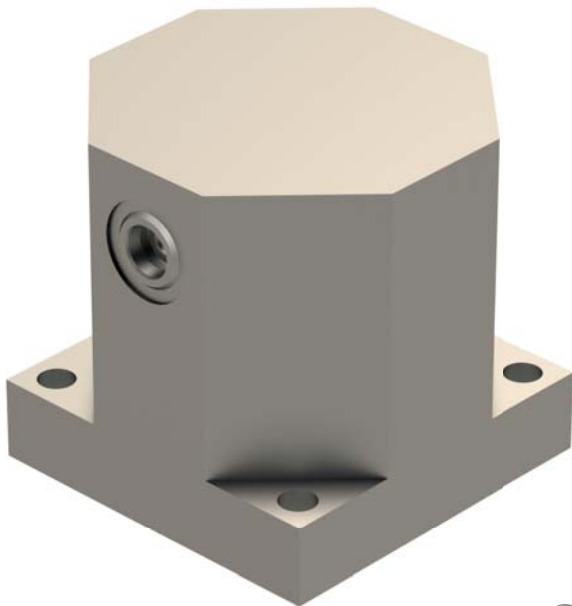


	-
	-
RPM max.	-
<b>Machines Types</b>	SW-42
<b>Note :</b>	

For 2x KM-23 tool holders pre-setting block.



## ZBDO-CR



	-
	-
RPM max.	-
<b>Machines Types</b>	SW-42
<b>Note :</b>	

Pre-setting block for Quick change



## LL-30-KM32

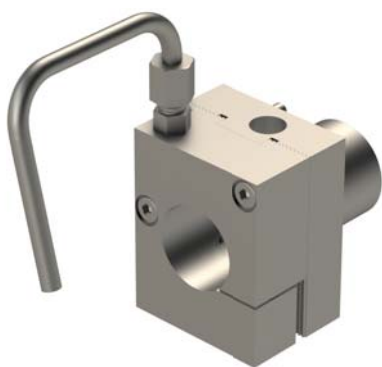


	-
	-
RPM max.	-
<b>Machines Types</b>	SW-42
<b>Note :</b>	

For KM-23 tool holders.  
Basis LL-30-00  
Head LL-30-01



## LL-30-HF



	-
	-
RPM max.	-
<b>Machines Types</b>	SW-42
<b>Note :</b>	

For high frequency spindle.  
Basis LL-30-00  
Head LL-30-02

